



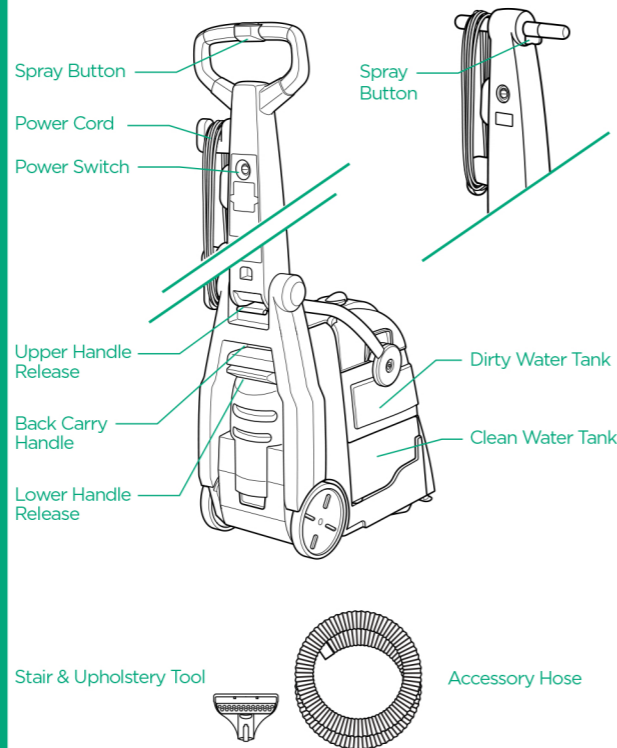
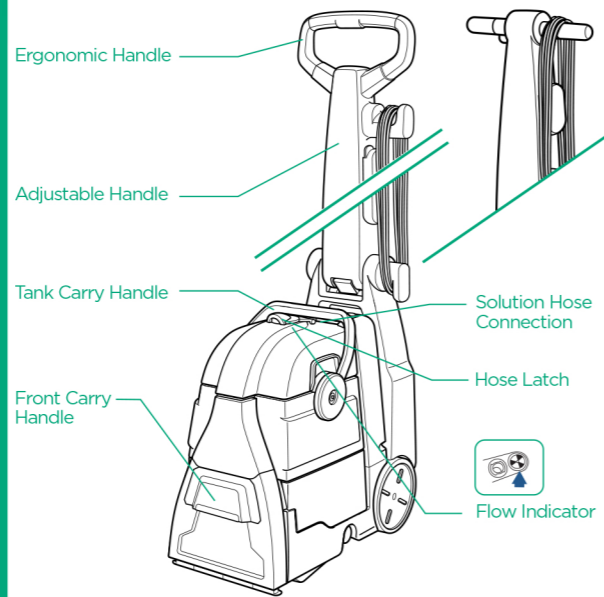
RENTAL

**BIG GREEN**  
deep cleaning machine®

# How to Use



Scan to watch  
how-to videos



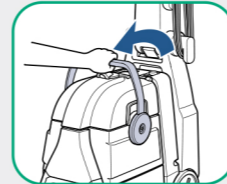
**LEARN MORE ABOUT  
INGREDIENTS & PATENTS**  
[www.BISSELLrental.com](http://www.BISSELLrental.com)  
[www.BISSELL.com/patents](http://www.BISSELL.com/patents)  
1.800.237.7691

## BEFORE CLEANING

- 1 Vacuum area thoroughly.
- 2 Pre-treat tough stains or high traffic areas.

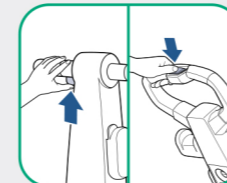
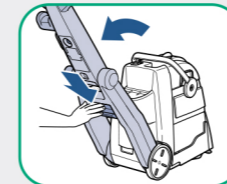
## PREPARING THE MACHINE

- 1 Pull top tank handle up and lift to remove dirty water tank and tank cover.
- 2 Remove bottom clean water tank and fill with hot tap water to the WATER line.
- 3 Measure BISSELL formula using cap on tank. Fill cap to line twice for each full tank of water.
- 4 Screw cap back on and set tank back on base of machine.
- 5 Replace dirty water tank on top and push handle back to lock into place.



## CARPET CLEANING

- 1 Plug into grounded outlet and turn machine ON.
- 2 Release handle.
- 3 While pressing the spray button, make one slow forward and backward cleaning pass.
- 4 Release the spray button and make another forward and backward pass to suction dirty water.



Note: For best results, overlap the edges of your cleaning passes by 3-4".

- 5 Repeat until solution being pulled up appears clean and no more water is being pulled up.

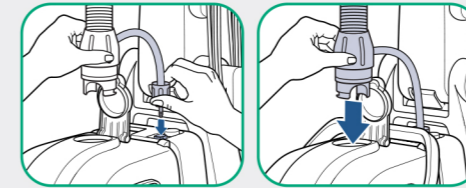


Note: While cleaning, watch the flow indicator, if it stops spinning, check the water tanks.

## UPHOLSTERY & STAIR CLEANING

- 1 Test a small hidden area for colorfastness. If color is affected do not use. Clean upholstery only if there is a W or WS on the manufacturer's tag.

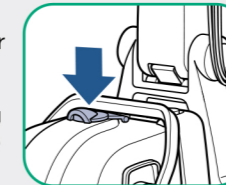
- 2 Connect smaller solution hose to top of machine and turn clockwise to lock, then lift cap on tank top and insert larger hose and turn clockwise to lock.



- 3 Press red spray button on hand tool to spray cleaning solution. Release button and slowly move tool back and forth to suction dirty water.

## EMPTYING THE MACHINE

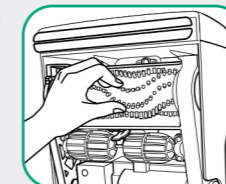
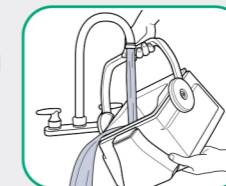
- 1 Pull tank handle up and lift to remove dirty water tank and tank cover.
- 2 Unlock cover by pushing handle forward. Remove and set aside.
- 3 Empty dirty water tank and rinse.



## BEFORE RETURNING MACHINE TO THE STORE

To avoid cleaning fee, follow these steps:

- 1 Unplug machine.
- 2 Rinse tank top, dirty and clean water tanks, removing all dirt and debris.
- 3 Remove hair and debris from bottom of machine and brush roll.
- 4 Wipe down bottom, wheels and outside of machine with a damp cloth.



Note: Do NOT spray machine with hose or immerse in water at any time.

# IMPORTANT SAFETY INSTRUCTIONS

When using an electrical appliance, basic precautions should be observed, including the following:

## ⚠ WARNING: To reduce the risk of fire, electric shock, or injury:

- Do not immerse.
- Use only on surfaces moistened by cleaning process.
- Always connect to a properly grounded outlet.
- See Grounding Instructions.
- Unplug from outlet when not in use and before conducting maintenance or troubleshooting.
- Do not leave machine when it is plugged in.
- Do not service machine when it is plugged in.
- Do not use with damaged cord or plug.
- If appliance is not working as it should, has been dropped, damaged, left outdoors or dropped into water, return it to the store.
- Use indoors only.
- Do not pull or carry by cord, use cord as a handle, close door on cord, pull cord around sharp corners or edges, run appliance over cord, or expose cord to heated surfaces.
- Do not handle plug or appliance with wet hands.
- Do not unplug by pulling on the cord.
- Do not put any object into appliance openings, use with blocked opening, or restrict air flow.
- Do not expose hair, loose clothing, fingers or body parts to openings or moving parts.
- Do not pick up hot or burning objects.
- Do not pick up flammable or combustible materials (lighter fluid, gasoline, kerosene, etc.) or use in the presence of explosive liquids or vapor.
- Do not use appliance in an enclosed space filled with vapors given off by oil base paint, paint thinner, some moth proofing substances, flammable dust, or other explosive or toxic vapors.
- Do not pick up toxic material (chlorine bleach, ammonia, drain cleaner, gasoline, etc.).
- Do not modify the 3-prong grounded plug.
- Do not allow to be used as a toy.
- Do not use for any purpose other than those described in this brochure.
- To unplug, grasp the plug, not the cord.
- Use only manufacturer's recommended attachments.
- Always install float before any wet pick up operation.
- Use only cleaning products formulated by BISSELL for use in this appliance to prevent internal component damage.
- Keep openings free of dust, lint, hair, etc.
- Do not point attachment nozzle at people or animals.
- Keep appliance on a level surface.
- Do not use without intake screen filter in place.
- Turn off all controls before unplugging.
- Be extra careful when cleaning stairs.
- Close attention is necessary when used by or near children.

THIS MODEL IS FOR COMMERCIAL USE.

## GROUNDING INSTRUCTIONS

This appliance must be connected to a grounded wiring system. If it should malfunction or break down, grounding provides a safe path of least resistance for electrical current, reducing the risk of electrical shock. The cord for this appliance has an equipment-grounding conductor and a grounding plug. It must only be plugged into an outlet that is properly installed and grounded in accordance with all local codes and ordinances.



## ⚠ WARNING:

Improper connection of the equipment-grounding conductor can result in a risk of electrical shock. Check with a qualified electrician or service person if you aren't sure if the outlet is properly grounded. DO NOT MODIFY THE PLUG. If it will not fit the outlet, have a proper outlet installed by a qualified electrician. This appliance is designed for use on a nominal 120-volt circuit, and has a grounding attachment plug that looks like the plug in the drawing above. Make certain that the appliance is connected to an outlet having the same configuration as the plug. No plug adapter should be used with this appliance.