



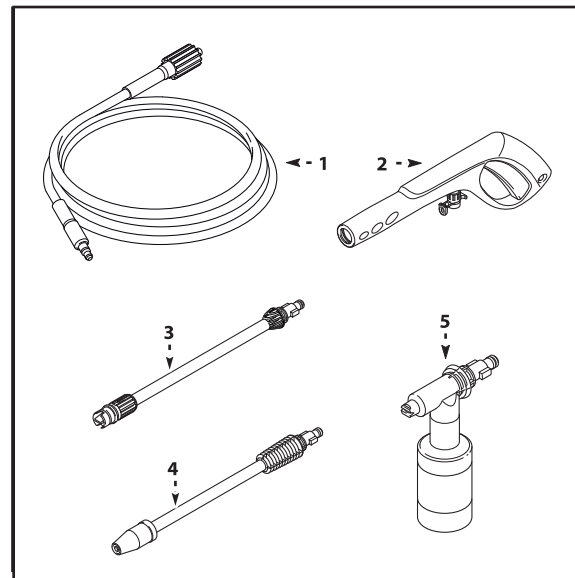
POWERWASHER
Instruction Manual

BISSELL POWERWASHER



Table of Contents

Power Washer Contents	2
Safeguards & Warnings* <i>*Important to read</i>	3-6
Assembly Instructions	7-10
Operating Instructions	11-12
Troubleshooting & FAQ	13-16



1. High-Pressure Hose
2. Spray Gun
3. Adjustable Spray Lance
4. Turbo Lance
5. Detergent Bottle



SAFEGUARDS & WARNINGS



- To avoid injury and property damage, follow all safety instructions, tips, and warnings.
- Familiarize yourself with all controls and operating instructions before use.
- Do not modify or rebuild. This machine conforms to all safety and consumer standards.
- Do not operate while under the influence of drugs, alcohol, or exhaustion.
- Beware of slippery surfaces while using and never operate the power washer in bare feet, sandals, or open-toed shoes.
- Never let a child use the power washer and keep nearby children under close, adult supervision when in use.
- Keep all body parts clear of the stream of high pressure water. Injury can occur. Always wear eye protection when operating the power washer.
- Always use the trigger safety lock when power washer is not in use—even momentarily—to avoid injury.



SAFEGUARDS & WARNINGS

- The power washer is equipped with a Ground Fault Circuit Interrupter (GFCI) which greatly reduces the chance of electric shock while the unit is in use.
- When first using, point the spray gun in a safe direction. Hold spray gun and lance with two hands while pulling the trigger to get used to the “kick back.”
- After switching the power washer “off,” discharge excess water pressure by spraying the gun in a safe direction.
- Never spray flammable liquid. Never use power washer in areas with combustible dust, liquids, or vapors.
- Avoid contact between the pressure hose and any sharp objects.
- Only use detergent specifically formulated for powerwashers and follow all instructions on detergent label.
- Protect eyes, skin, and lungs from exposure to detergent. Do not use dish or laundry soap.

IMPORTANT:



- Store power washer indoors. Freezing conditions will damage power washer.
- Never leave a power washer unattended while “on.”
- Never use an extension power cord.
- Never spray any electrical outlet with power washer.
- Never use a water supply that exceeds 150 psi maximum.
- Never disconnect the high pressure hose while power washer is pressurized.
- Never allow the power washer pump to run for more than 1 minute after you have turned off the water supply.

IMPORTANT:



- Never permanently engage the trigger mechanisms on the spray gun.
- Never use hot water in power washer.
- Never use parts that have not been supplied with your power washer.
- Operate the power washer only when all components are properly and securely connected.
- Turn water supply “on” before turning power washer power to “on.”
- Inspect the power cord before using. If damaged, do not use.

HIGH PRESSURE HOSE:

- At the back bottom of the unit, screw on the high pressure hose clockwise (fig. 1). Insert the hose far enough so the collar can thread into the outlet threads until hand tight. Do not use pliers or grips.
- Tightening the high pressure hose *should* take more than 6 clockwise turns to tighten properly.
- Connect the other end of the high pressure hose to the spray gun by inserting the brass tip of the high pressure hose into the fitting just in front of the trigger guard. It will lock into place (fig. 2).
- Press the blue button on underside of gun to release the hose from the spray gun.

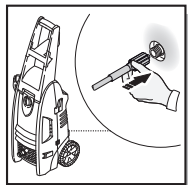


fig. 1

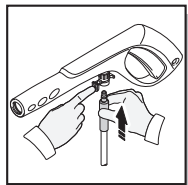


fig. 2

7

SPRAY GUN:

- Lock the trigger of the spray gun by aiming gun away from you and pushing the lock button from right to left. Squeeze trigger to test that it is locked. Always lock the trigger when power washer is not in use (fig. 3).
- While spray gun is locked, insert turbo lance, adjustable spray lance, or detergent bottle directly into the end of the spray gun by inserting, pushing together, and turning clockwise simultaneously (fig. 4). To remove, push together and turn counterclockwise.
- The turbo lance is for high impact cleaning—hard surfaces like driveways, cement surfaces, patio bricks, etc. Warning: test a strip of surface prior to cleaning to avoid damage. Be sure the turbo lance is screwed on tight with each use.
- The adjustable spray lance can be used for the widest variety of cleaning like sweeping leaves or debris from flat surfaces or curbing. The spray pattern and intensity can be controlled by twisting the spray nozzle at the far end of the lance (fig. 5).

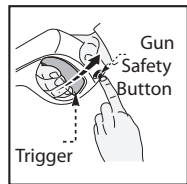


fig. 3

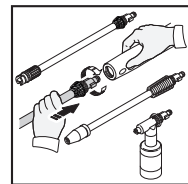


fig. 4

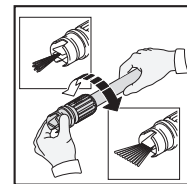


fig. 5

8

DETERGENT:

- Use a properly formulated detergent with water ratio according to instructions on the container (fig. 6).
- The detergent comes with a straw fitted into the screw-on top. (fig. 7)

DETERGENT TIPS:

- Always spray detergent on a dry surface.
- Do not pre-soak area.
- Do not allow detergent to dry on surface.
- On vertical surfaces, apply detergent to lower surfaces and work upwards to avoid streaks.
- Rinse detergent by power washing from bottom to top.
- For tough stains, reapply detergent and use a stiff bristled brush to scrub followed by power washing rinse.

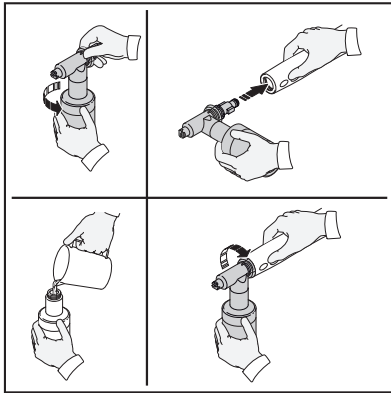


fig. 6

**GARDEN HOSE ATTACHMENT:**

- Screw your garden hose on to the garden hose attachment on the front of the machine (fig. 8).
- The water supply is now connected to the power washer.
- To remove water hose, unscrew from attachment.

Note: this can be done at any time. Water will only flow from the garden hose when it is connected.

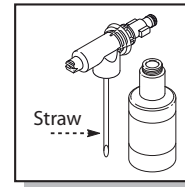


fig. 7

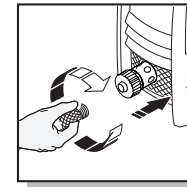


fig. 8

BISSELL POWERWASHER
assembly is complete and ready to use.
Follow all safety instructions.

OPERATING INSTRUCTIONS: ○ ○

1. Make sure the power switch is in the OFF (O) position (fig. 11).
2. Turn on the water supply at the faucet.
3. Unwind the power cord and plug the GFCI into a grounded 120 volt outlet. Press the 'reset' button on the GFCI box (fig. 9). Indicator window will show red. Reset each time the unit is plugged in.
4. Release safety lock button on spray gun (fig. 10) while pointing in safe direction and squeeze trigger until it sprays a steady stream of water.
5. Turn the power switch to ON (--) (fig. 11).

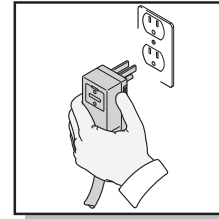


fig. 9

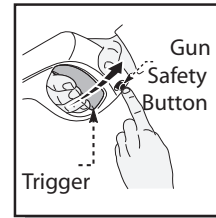


fig. 10

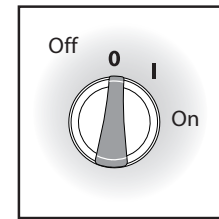


fig. 11

IMPORTANT TIPS:



1. It is normal to hear the motor run intermittently when the trigger is not being squeezed.
2. Turn off the powerwasher if not in use after 5 minutes.
3. Avoid damaging surfaces by varying the force of the spray. You can do this by controlling:
 - the fan pattern of the adjustable nozzle
 - the angle of the surface being cleaned
 - the distance between the nozzle and the surface being cleaned.



IMPORTANT TIPS:

4. Never use a narrow high pressure stream of water or the turbo lance on soft surfaces.
5. Use the adjustable spray lance when cleaning windows. Take care to adjust nozzle to a wide fan spray pattern and spray 4 to 5 feet away with the nozzle at a 45 degree angle. Squeeze the trigger and vary fan spray pattern and angle before cleaning (fig 13).
6. The system applied detergent under low pressure, which enhances the cleaning power of the detergent. Dirt and grime are broken up more effectively than scrubbing if applied correctly with low pressure.

Unit will not turn on.

1. Be sure the power switch is "OFF."
2. Plug in the electrical cord to a grounded 120 volt outlet (do not use an electrical extension cord!). If the electrical cord will not plug into your outlet, your electrical outlet is not properly grounded and should not be used. Use another electrical outlet.
3. Press the reset button on GFCI power box. If red is not visible in the window, unplug and plug in again. Press reset, and look for red in the window, this should stay red. Once it does, turn the power switch to "ON." Squeeze trigger on spray gun and try again.

**If this did not correct the problem, try using another electrical outlet and repeat the above.

If it is still not working, call Customer Service at
1-800-749-9062.

The unit is running but there is no water flow.

Check water source. Unclog nozzle on lance or use spray gun without lance.

**The high-pressure (HP) hose will not connect/stay connected to the spray gun.**

In most cases, the spray gun is not the problem. The problem is the rubber sleeve covering the fitting at the end of the high pressure hose.

To fix:

1. wiggle, twist and/or pull the rubber sleeve down until the entire metal tip is visible plus 1/8" of the metal fitting below the tip.
2. Now insert the hose tip into the spray gun. It should "click" into place and not come out until the hose is released by pushing the lever on the underside of the gun.

Why is water leaking where the high-pressure hose connects to the spray gun?

Make sure there is an o-ring at the end of the metal tip of the high pressure hose. If no o-ring is present, the connection between the hose and spray gun will leak.

The powerwasher turns on for 2 seconds, shuts off, and will not turn back on. Do I have a defective unit?



This is normal.

When everything is assembled properly and the power switch is turned on, the powerwasher may turn on for 1 – 2 seconds to prime the pump. It automatically shuts off; when the trigger is pressed, water starts flowing through the pump. The water sensor in the pump automatically turns the powerwasher on.

1. Turn the power switch to “OFF,” hold the trigger on the spray gun to spray a steady stream of water.
2. While holding the trigger on the spray gun, turn the power switch “ON.”



I can't remove the lance from the spray gun. What should I do?

1. Insert the quick-release end of the lance/ detergent bottle into spray gun.
2. Press spray gun and lance/bottle together (appx 1/8”) and turn clockwise. The lance/bottle will lock in place.
3. Remove lance/bottle by reversing this procedure.
4. Press spray gun and lance/bottle together and turn counter clockwise. The lance will slide out.
5. Or, hold spray gun and lance/bottle in an upright position with the nozzle end on the floor and push the whole assembly straight down to loosen the connection, then follow the removal process again.
6. You may also spray soapy water or a lubricant in the area where the lance connects to the spray gun.



**TROUBLESHOOTING,
QUESTIONS &
MORE INFORMATION:**

Call: 800.749.9062

1601175

© 2013 BISSELL Rental, LLC.
GRAND RAPIDS, MI 49544 USA